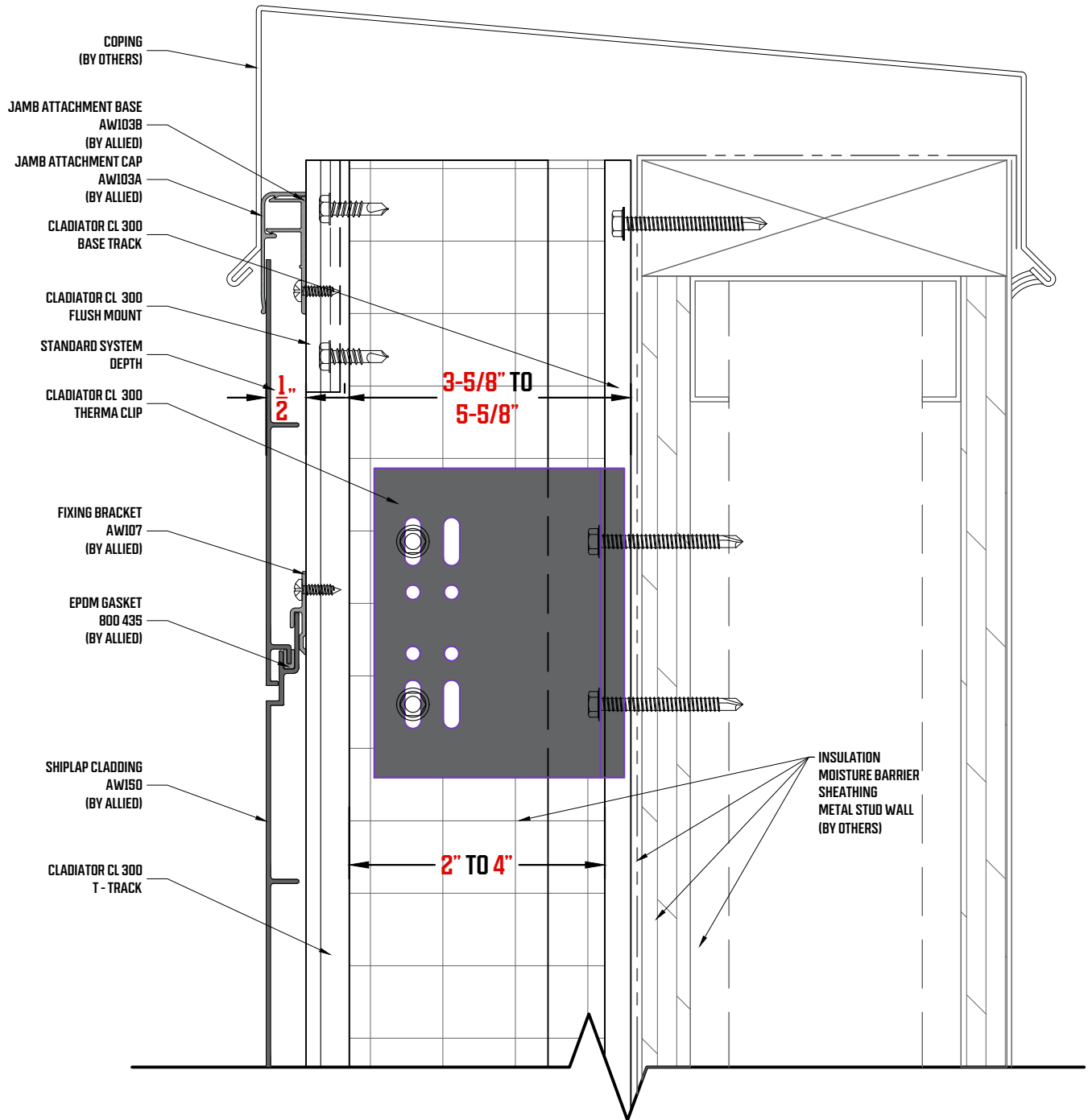


# APROWOOD®

## Sustainable Aluminum Cladding Panel System Coping Detail

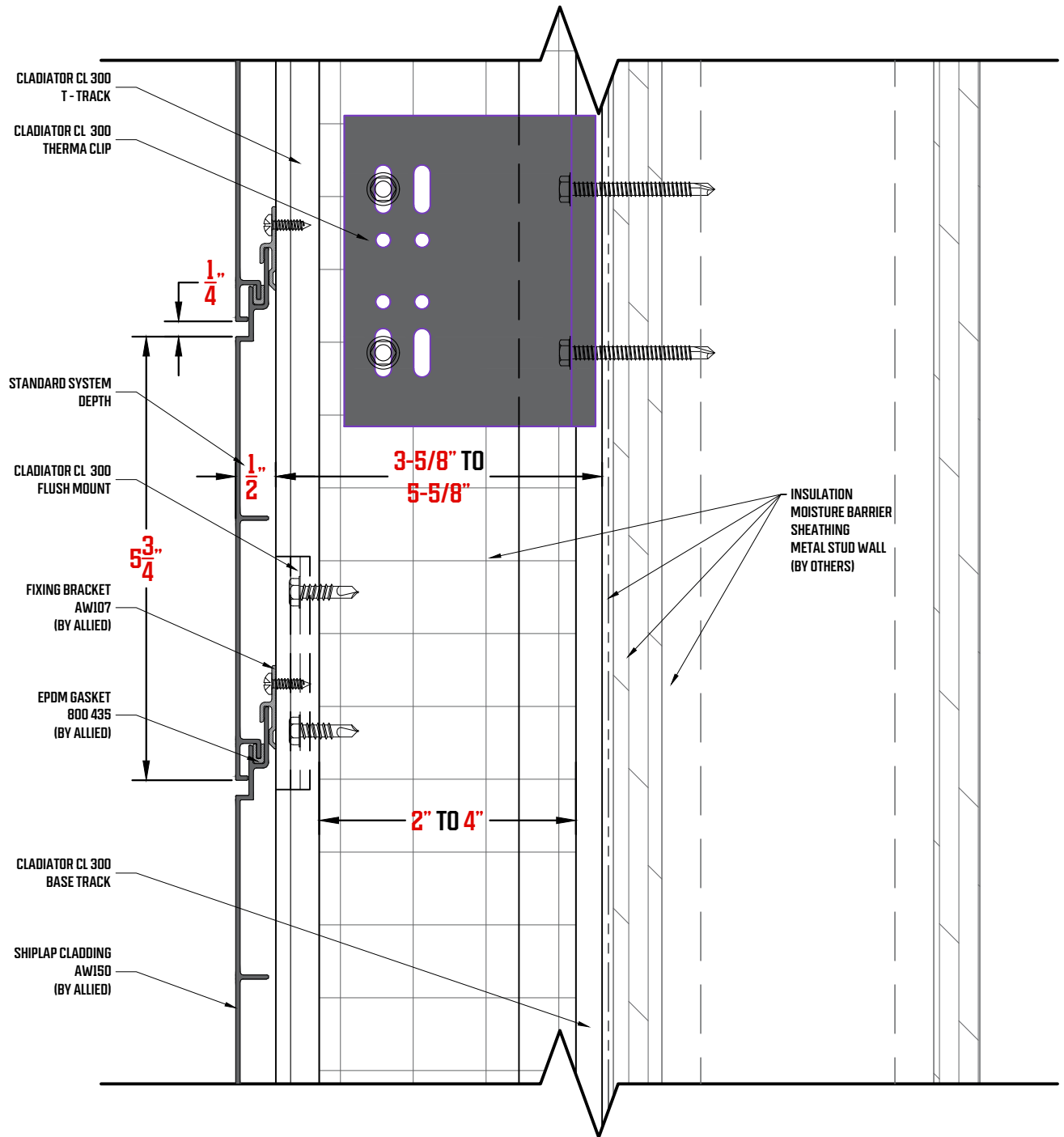


# APROWOOD®

## APROWOOD AW-150 OVER CLADIATOR CL 300 THERMALLY ISOLATED CLADDING SUPPORT SYSTEM

# APROWOOD®

## Sustainable Aluminum Cladding Panel System Horizontal Joint Detail

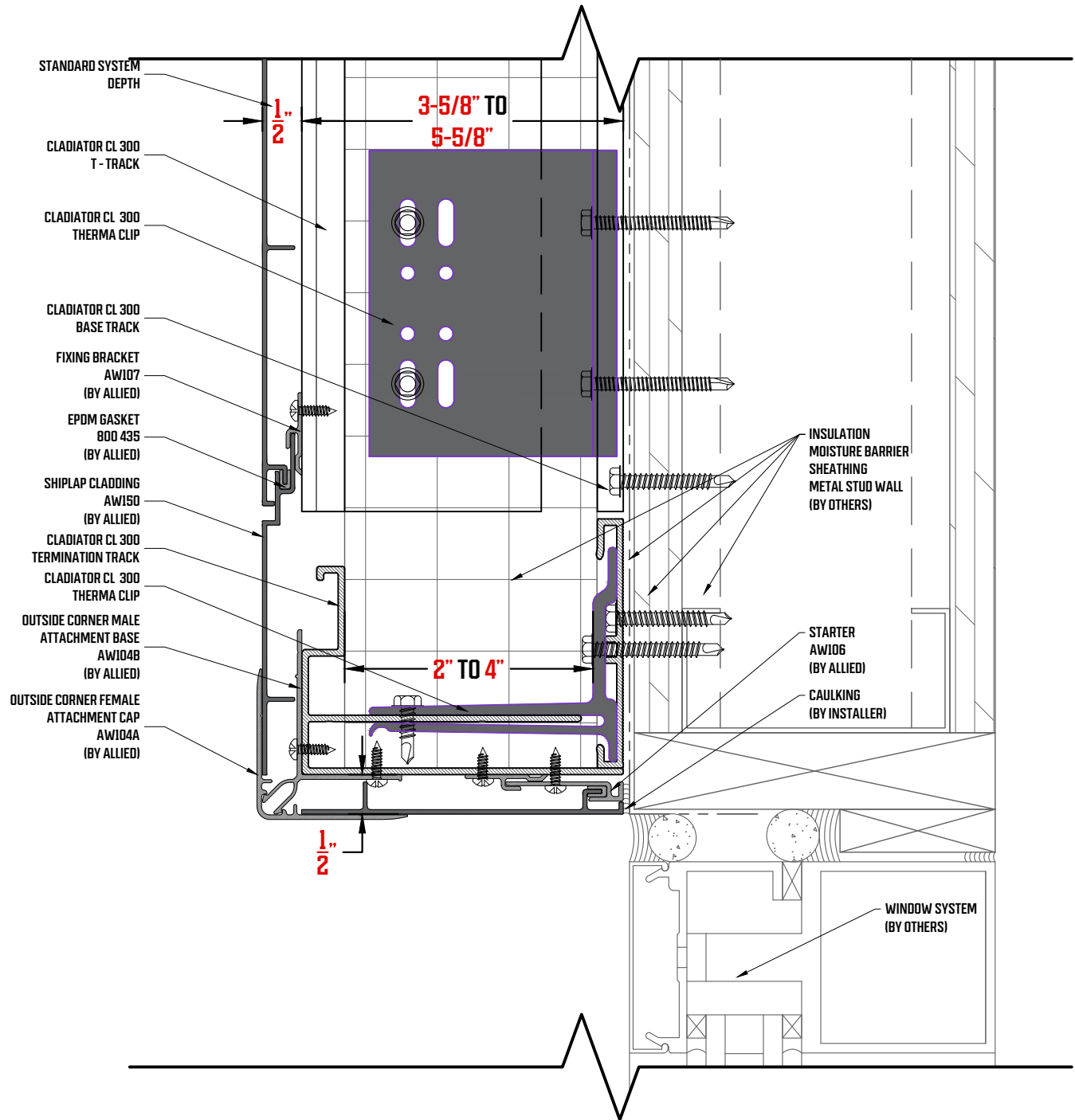


# APROWOOD®

## APROWOOD AW-150 OVER CLADIATOR CL 300 THERMALLY ISOLATED CLADDING SUPPORT SYSTEM

# APROWOOD®

## Sustainable Aluminum Cladding Panel System Header Detail

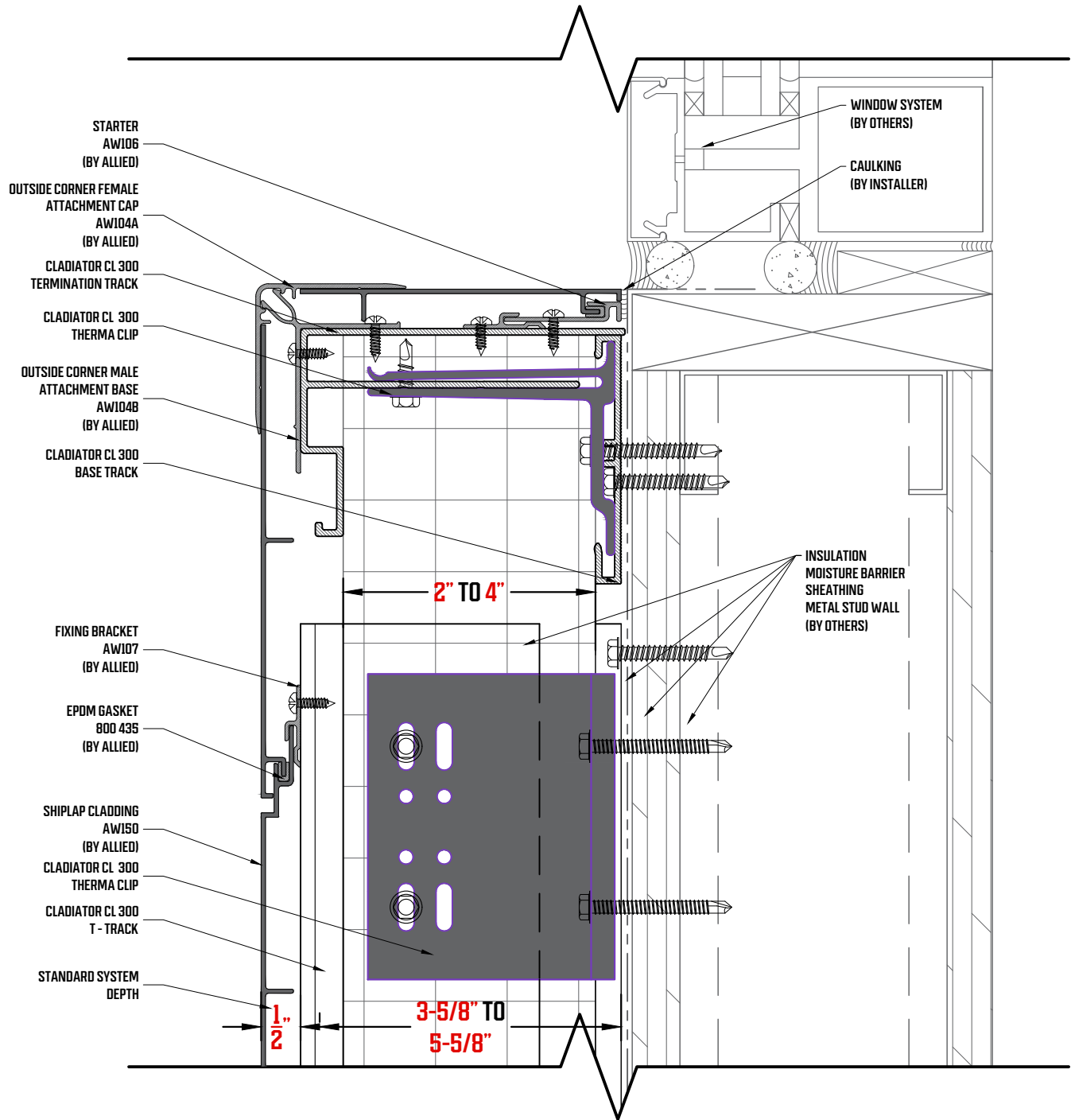


APROWOOD®

## APROWOOD AW-150 OVER CLADIATOR CL 300 THERMALLY ISOLATED CLADDING SUPPORT SYSTEM

# APROWOOD®

## Sustainable Aluminum Cladding Panel System Window Sill Detail

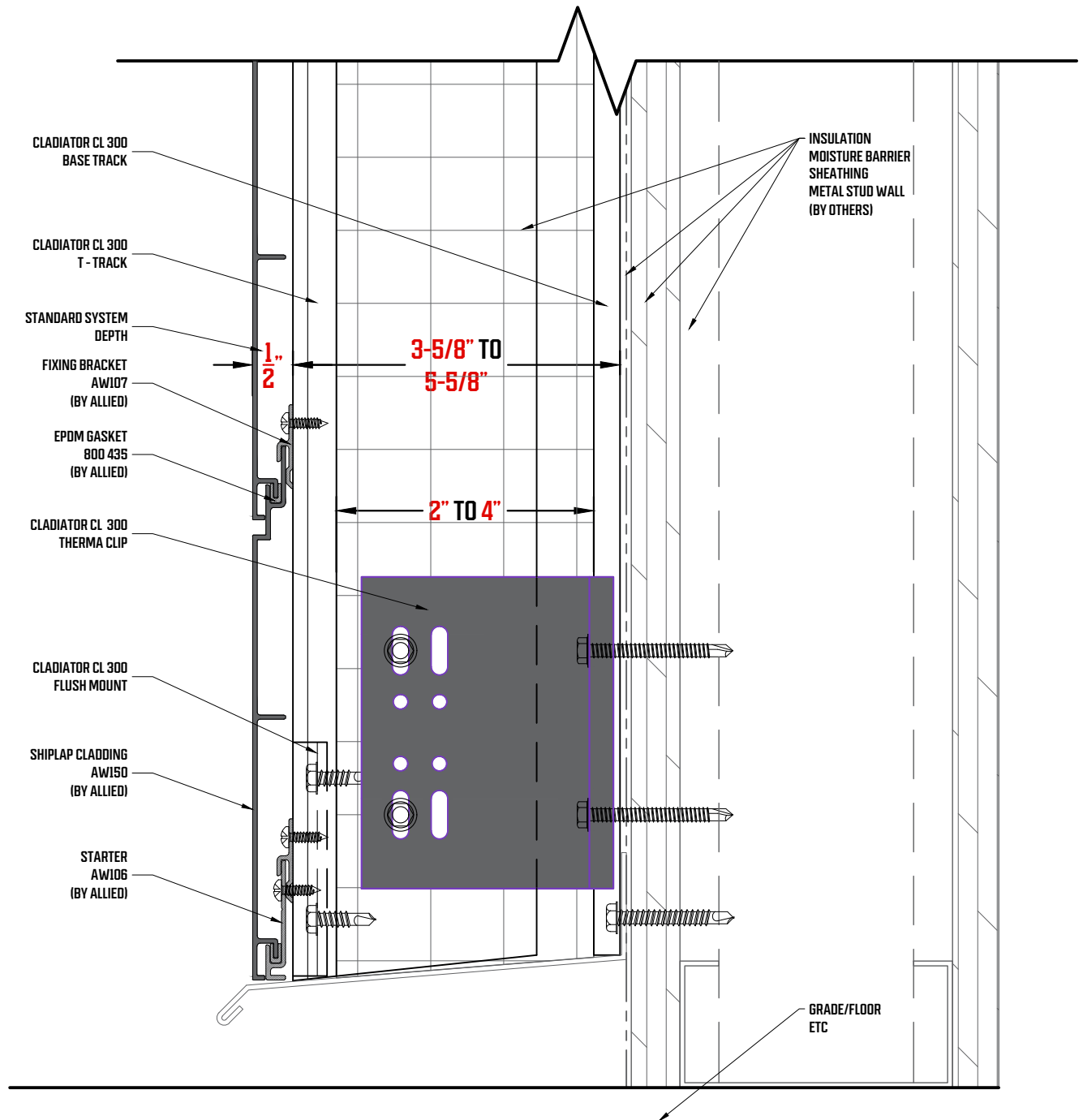


APROWOOD®

## APROWOOD AW-150 OVER CLADIATOR CL 300 THERMALLY ISOLATED CLADDING SUPPORT SYSTEM

# APROWOOD®

## Sustainable Aluminum Cladding Panel System Termination at Grade Detail

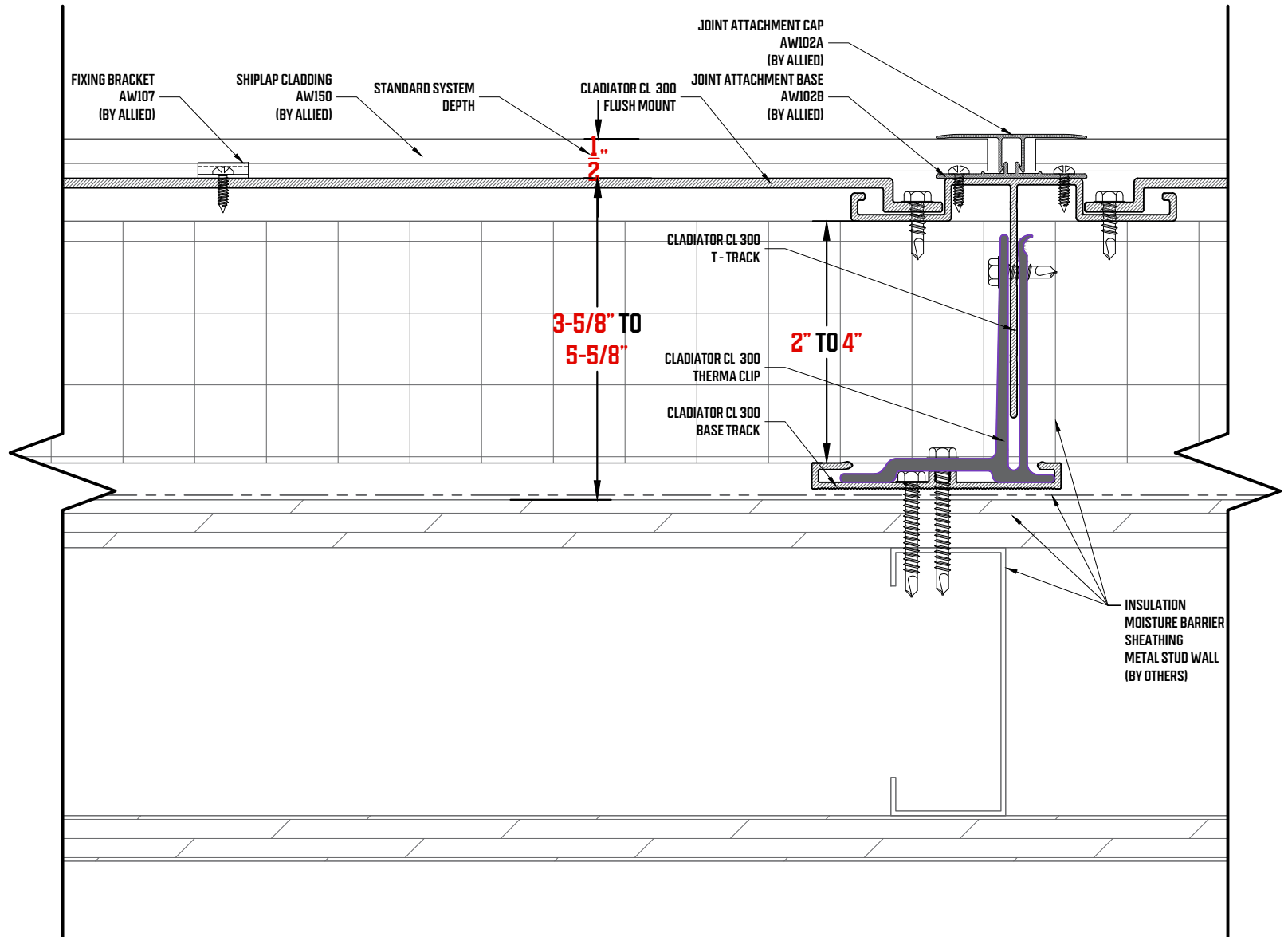


# APROWOOD®

## APROWOOD AW-150 OVER CLADIATOR CL 300 THERMALLY ISOLATED CLADDING SUPPORT SYSTEM

# APROWOOD®

## Sustainable Aluminum Cladding Panel System Vertical Joint Detail



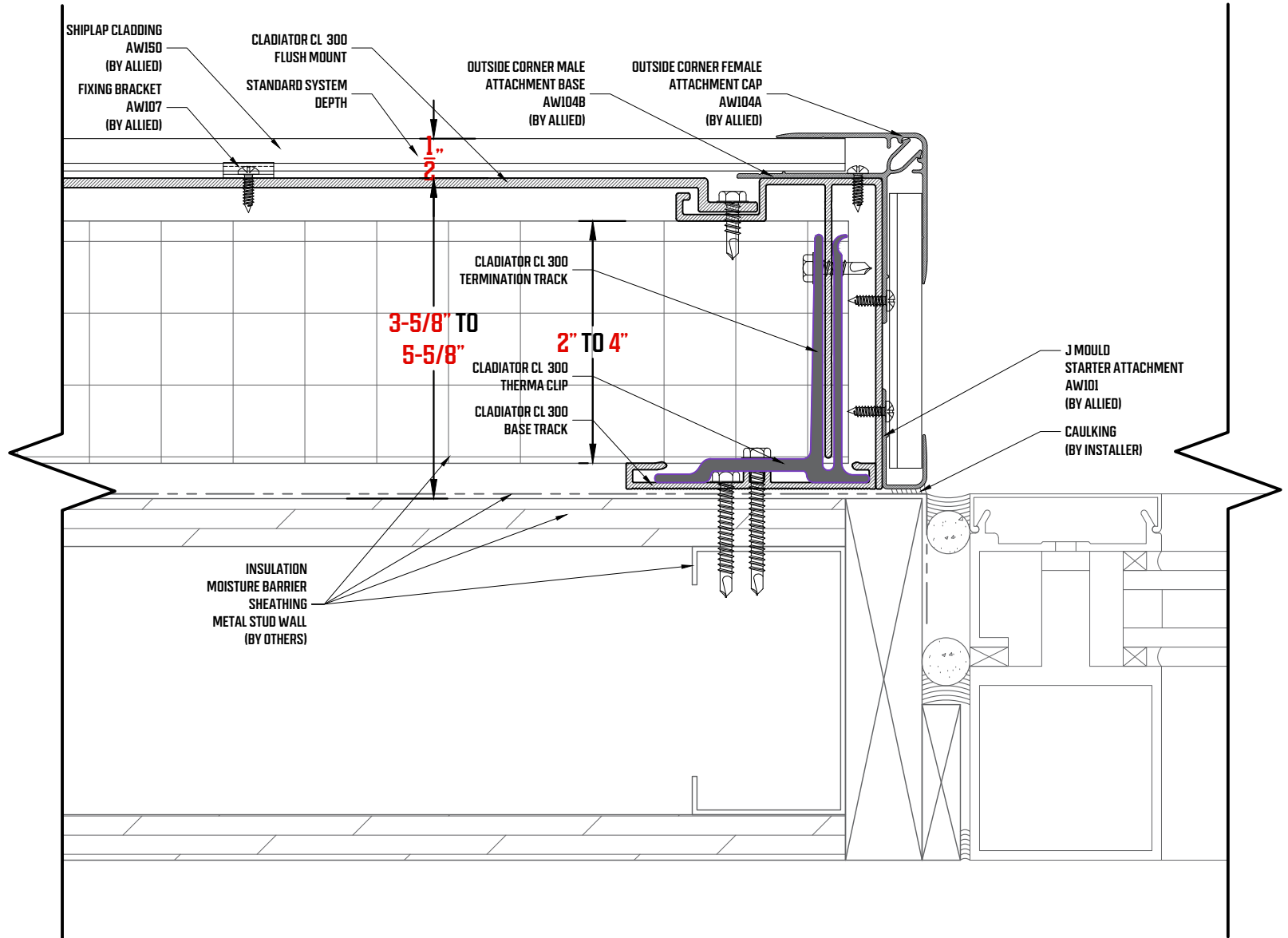
APROWOOD®  
THERMALLY ISOLATED CLADDING  
SUPPORT SYSTEM

APROWOOD AW-150 OVER

CLADIATOR CL 300

# APROWOOD®

## Sustainable Aluminum Cladding Panel System Jamb Detail



**APROWOOD®**  
THERMALLY ISOLATED CLADDING  
SUPPORT SYSTEM

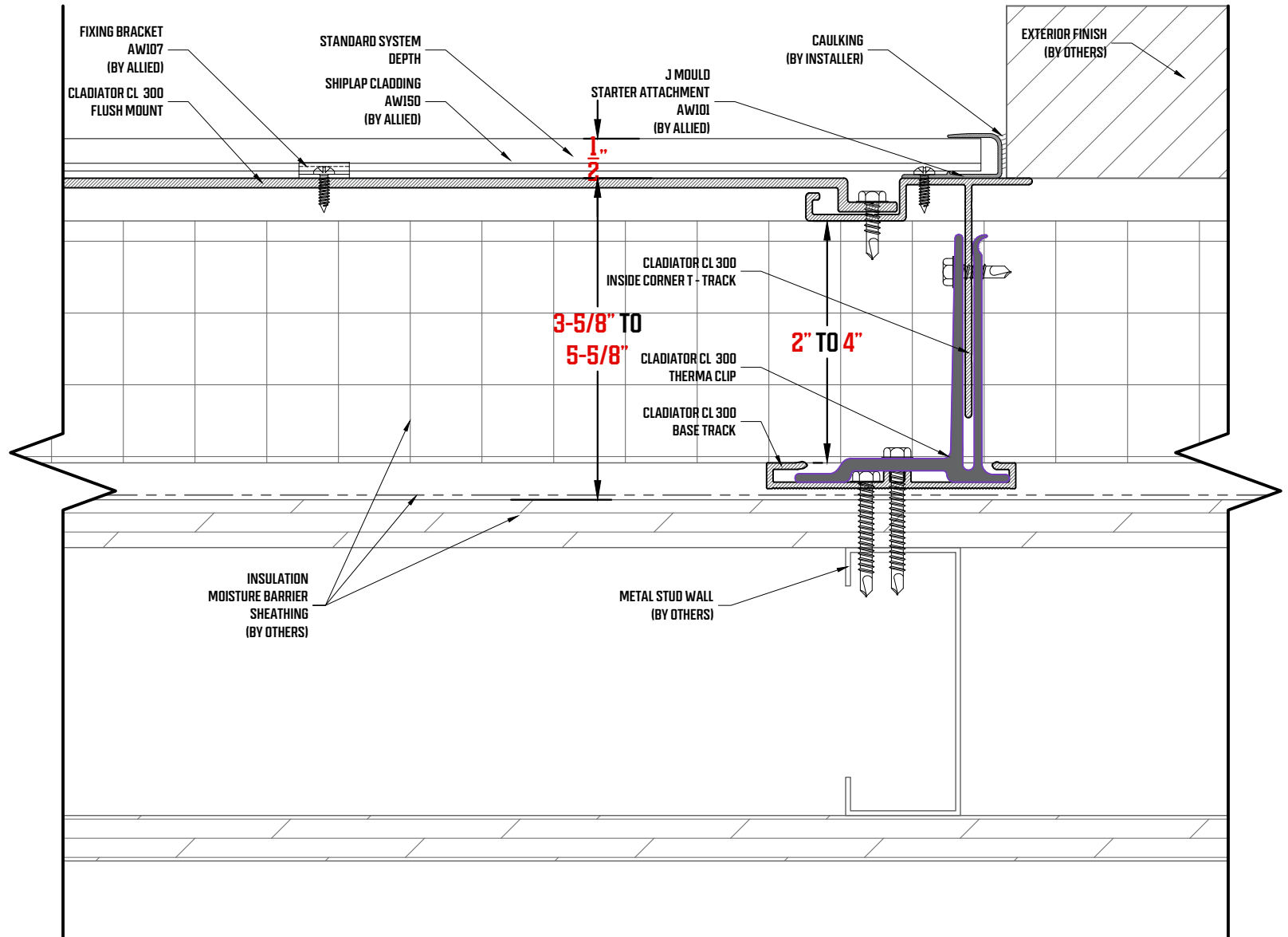
**APROWOOD AW-150 OVER**

**CLADIATOR CL 300**

Confidential Document: Property of Allied Specialty Group (ASG). Any transfer of this document without the express written permission of ASG is unlawful. This document includes Original, duplicate, and electronic versions. All are exclusive information contained herein or related thereto is intended only for evaluation by technically skilled persons, with any use thereof to be at their independent discretion and risk. Such information is believed to be reliable, but ASG shall have no responsibility or liability for results obtained or damages resulting from such use. ASG grants no license under, and shall have no responsibility or liability for infringement of, any patent, proprietary right. Sales of ASG products shall be independent and subject exclusively to warranties set forth in ASG acknowledgment. The foregoing may be waived or modified only in writing by an ASG officer. APROWOOD®, CLADIATOR™, THERMACLIP™ and ALLIED SPECIALTY GROUP are registered trademarks of Allied Specialty Group Inc. All rights reserved.

# APROWOOD®

## Sustainable Aluminum Cladding Panel System Termination Detail



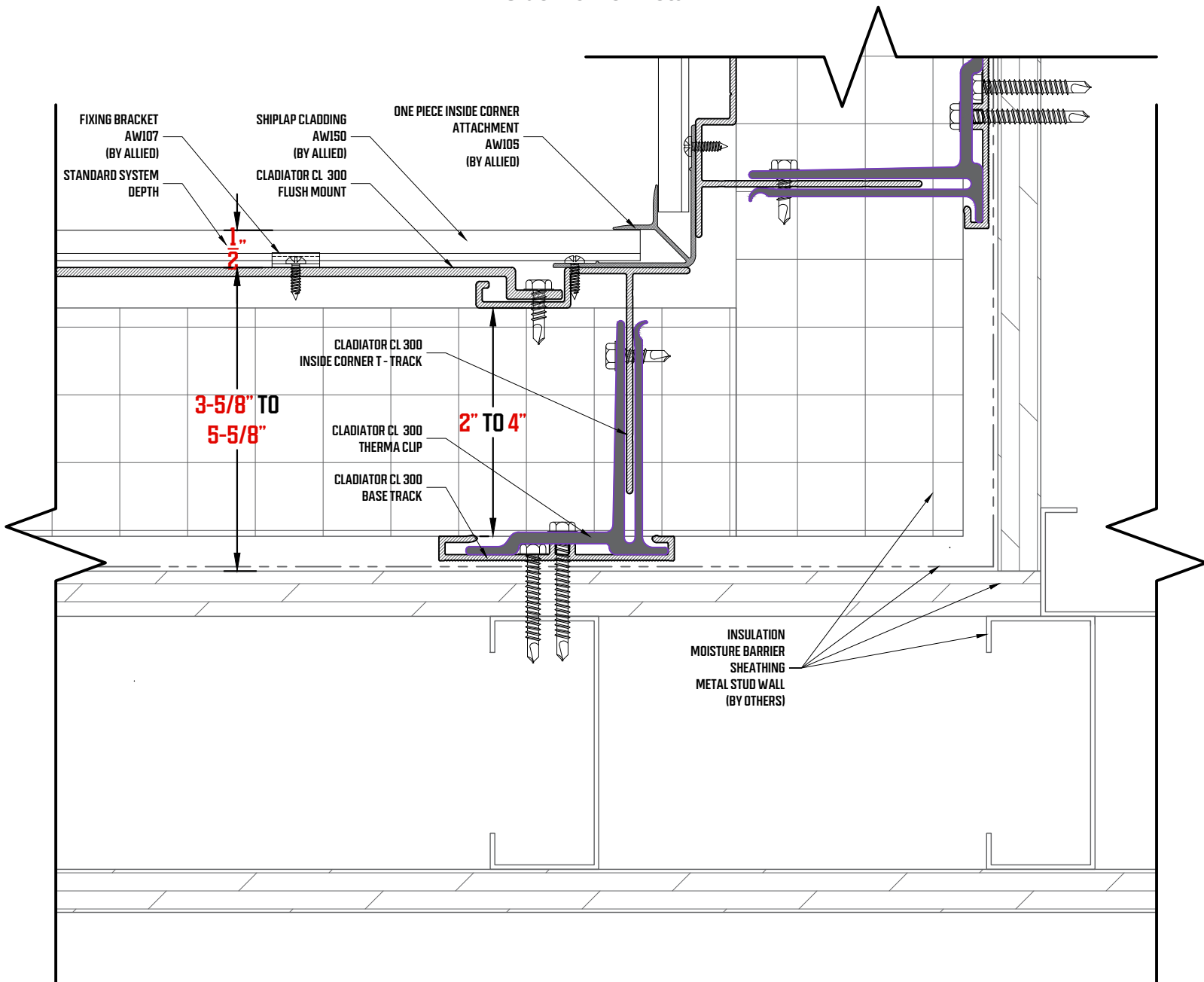
APROWOOD®

APROWOOD AW-150 OVER  
CLADIATOR CL 300  
THERMALLY ISOLATED CLADDING  
SUPPORT SYSTEM



# APROWOOD®

## Sustainable Aluminum Cladding Panel System Inside Corner Detail



**APROWOOD®**  
**THERMALLY ISOLATED CLADDING**  
**SUPPORT SYSTEM**

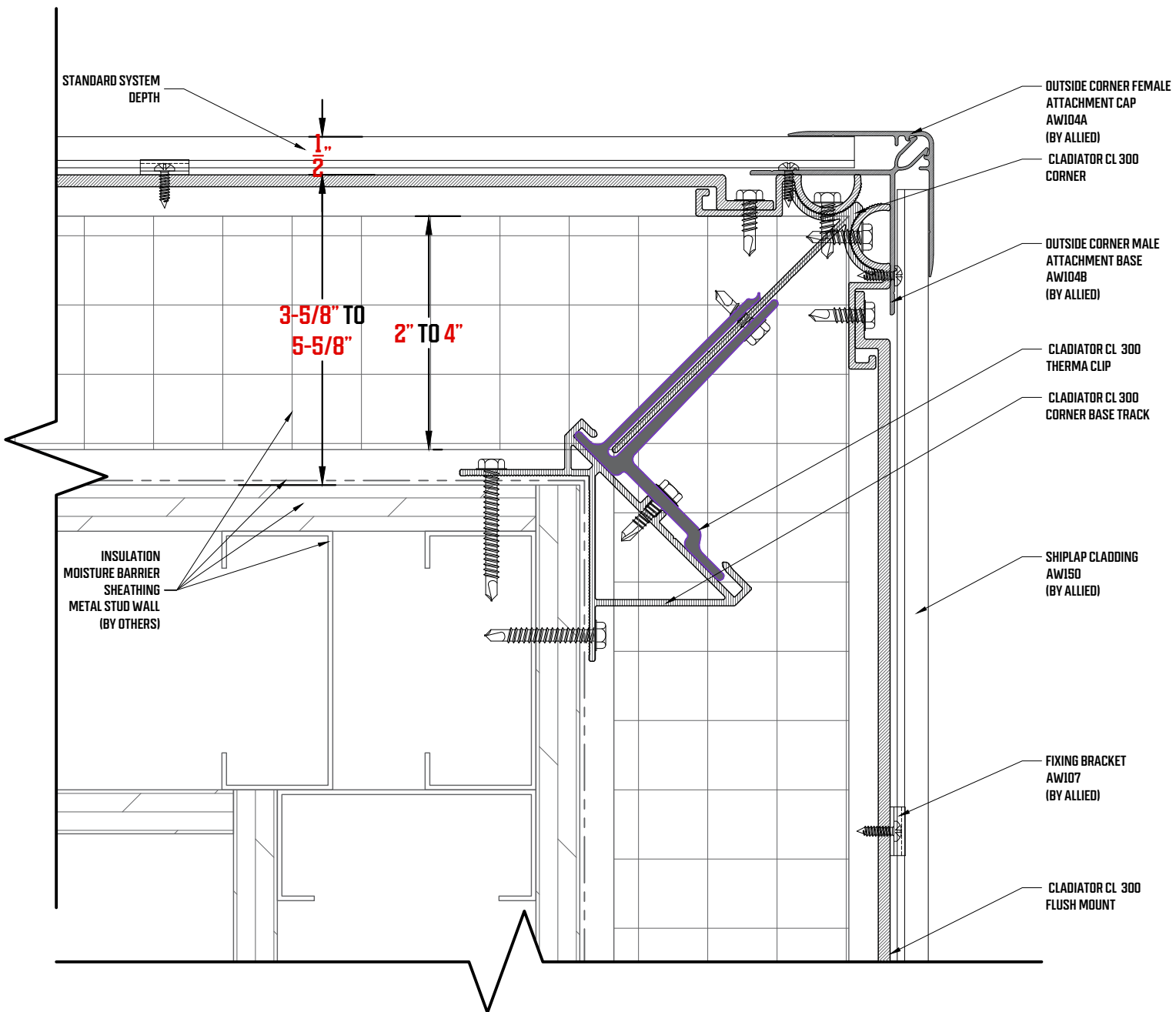
**APROWOOD AW-150 OVER**

**CLADIATOR CL 300**

Confidential Document: Property of Allied Specialty Group (ASG). Any transfer of this document without the express written permission of ASG is unlawful. This document includes Original, duplicates, and electronic versions. All are exclusive information contained herein or related thereto is intended only for evaluation by technically skilled persons, with any use thereof to be at their independent discretion and risk. Such information is believed to be reliable, but ASG shall have no responsibility or liability for results obtained or damages resulting from such use. ASG grants no license under, and shall have no responsibility or liability for infringement of, any patent, proprietary right. Sales of ASG products shall be independent and subject exclusively to warranties set forth in ASG acknowledgment. The foregoing may be waived or modified only in writing by an ASG officer. APROWOOD®, CLADIATOR™, THERMA-CLIP™, and ALLIED SPECIALTY GROUP® are registered trademarks of Allied Specialty Group Inc. All rights reserved.

# APROWOOD®

## Sustainable Aluminum Cladding Panel System Outside Corner Detail



**APROWOOD®**  
**THERMALLY ISOLATED CLADDING**  
**SUPPORT SYSTEM**

**APROWOOD AW-150 OVER**

**CLADIATOR CL 300**