



# APROWOOD®

**A sustainable wood alternative  
to the everyday.**

**SYSTEM AW 150 BROCHURE**

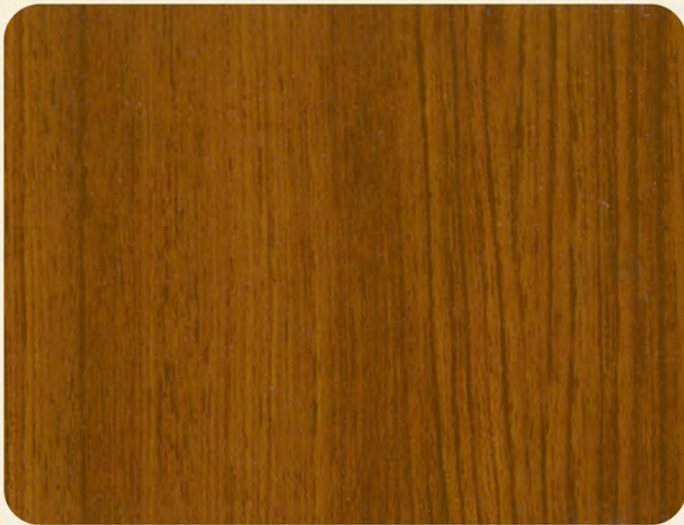
**A classic cladding with a modern design.**



Maple  
AW 9510



Golden Oak  
AW 5131



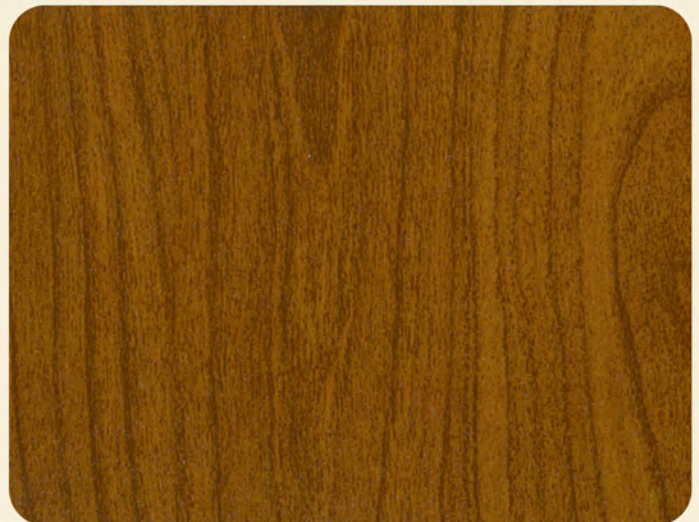
Teak  
AW 3181



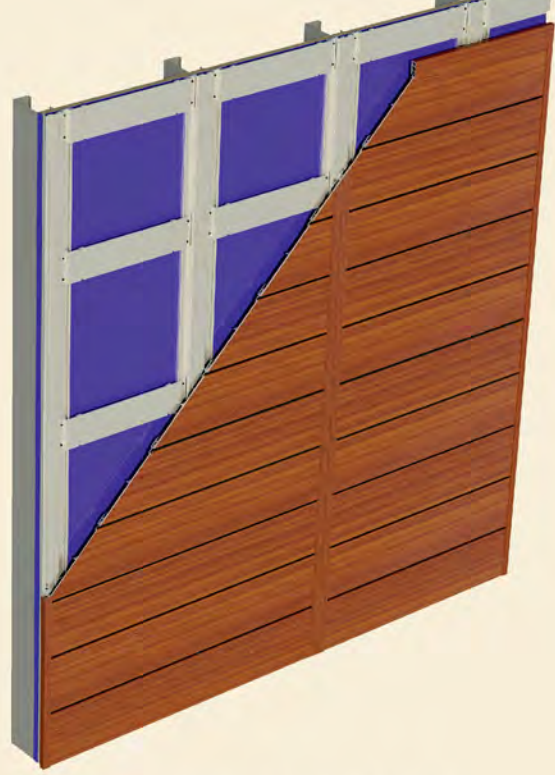
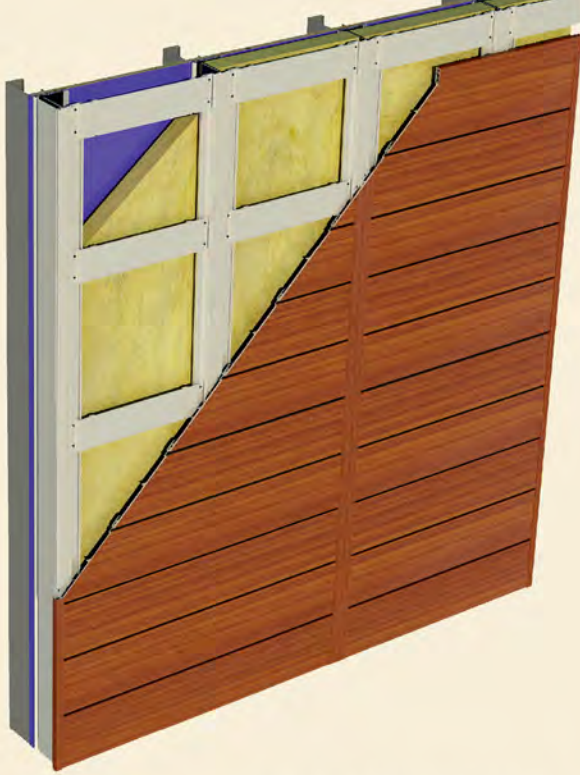
Pine  
AW 2522



Dark Oak  
AW 9391



Tilia  
AW 7161



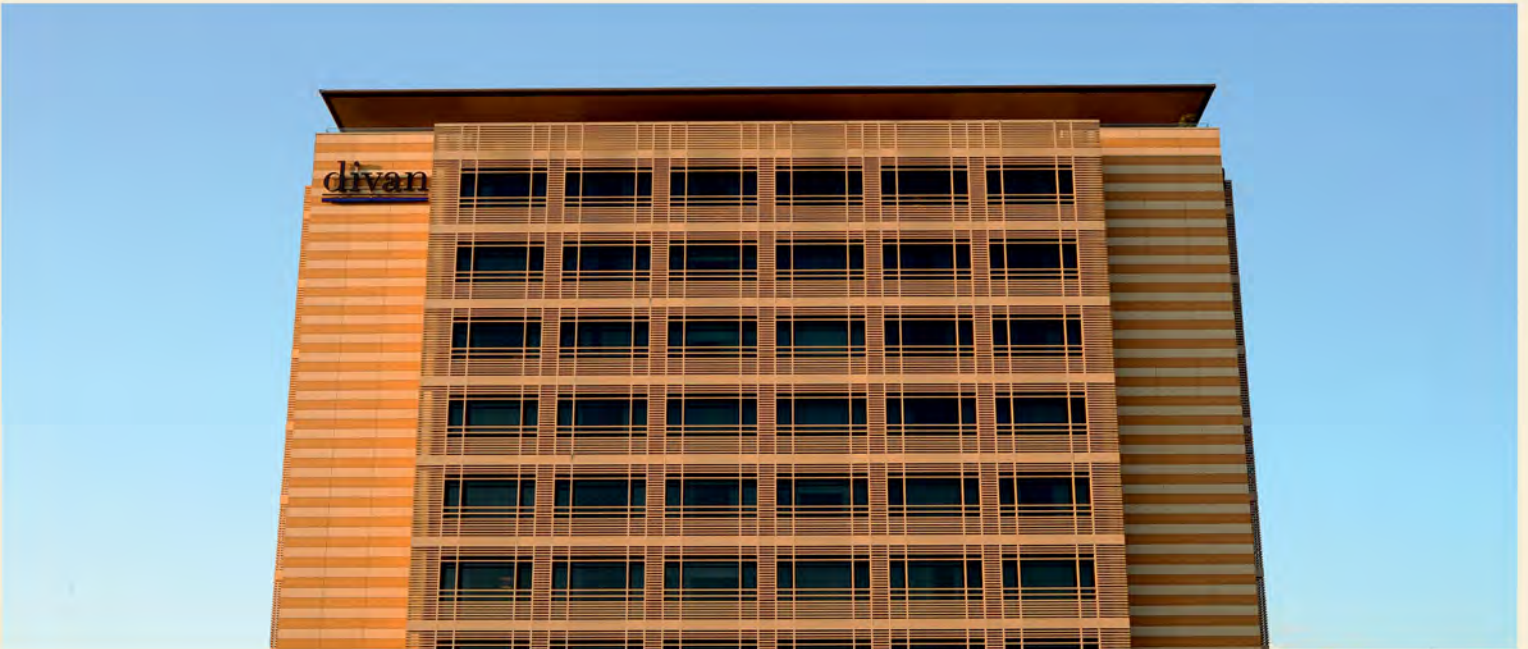
**APROWOOD® AW 150 is partner with  
CL-TALON™ Universal Wall Cladding Support Systems.**  
( [www.cl-talon.com](http://www.cl-talon.com) )

**APROWOOD® AW 150 can be  
installed on any substrate.**

APROWOOD ATTACHMENT PROFILE	PROFILE NUMBER	ATTACHMENT DESCRIPTION	APROWOOD - AW 150 SHIPLAP CLADDING
	AW 101	"J" Mold Starter Attachment	
	AW 102 A	Joint Attachment Cap	
	AW 102 B	Joint Attachment Base	
	AW 103 A	Jamb Attachment Cap	
	AW 103 B	Jamb Attachment Base	
	AW 104 A	Outside Corner Female Attachment Cap	
	AW 104 B	Outside Corner Male Attachment Base	
	AW 105	One Piece Inside Corner Attachment	
	AW 106	Starter	
	AW 107	Fixing Bracket	



# APROWOOD®



100% Recyclable  
Non - combustible  
Light Weight

Wood Grain or Solid Color  
Alternatives

Custom Colors for Special  
Projects  
Horizontal or Vertical  
Installation

DISTRIBUTOR INFORMATION